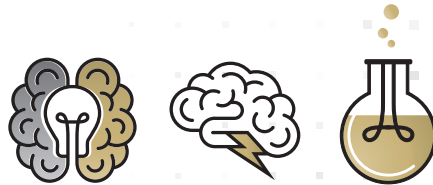


3-DAY EVENT AGENDAS & GUEST BIOS



CU ANSCHUTZ PRESENTS AN

INNOVATION FORUM

Hosted by CU Innovations, Startup Toolbox &
Academia Industry Alliance (AIA)

JUNE 10-12, 2024

WELCOME ATTENDEES!

#INNOVATIONFORUM

PLATINUM
SPONSORS:

Cooley



COLORADO
Office of Economic Development
& International Trade

SPONSORS:



KTC
CONSULTING



Innovations

UNIVERSITY OF COLORADO ANSCHUTZ MEDICAL CAMPUS

CUANSCHUTZ.EDU/CU-INNOVATIONS

DAY 1 AGENDA


MONDAY,
JUNE 10, 2024
AHSB ELLIMAN
CONF CENTER

CU ANSCHUTZ
INNOVATION FORUM PRESENTS



FOSTERING DIVERSITY IN INNOVATION

Hosted by CU Innovations

8:30 AM - 9:00 AM	LIGHT BREAKFAST & WELCOME REMARKS	NOON - 1:30 PM	NETWORKING LUNCH & KEYNOTE PRESENTATION
	THOMAS FLAIG, MD <i>Vice Chancellor for Research, CU Anschutz</i>		GITANJALI RAO <i>Inventor, Author & Speaker</i>
9:00 AM - 10:30 AM	SESSION 1 BREAKING THROUGH BARRIERS IN WOMEN'S HEALTH		MICHAEL MCMURRAY, PHD <i>Associate Professor, Cell and Developmental Biology, CU Anschutz</i>
	VIRGINIA BORGES, MD, MMSC <i>Professor, Medical Oncology, CU Anschutz</i>	1:30 PM - 2:45 PM	SESSION 3 POWER OF INTELLECTUAL PROPERTY PROTECTION
	TYRA FAINSTAD, MD <i>Associate Professor, Medicine, CU Anschutz, Co-Director, Better Together Physician Coaching</i>		BROOKE FRITZ, JD, MA <i>Special Counsel, Cooley LLP</i>
	ADRIENNE MANN, MD <i>Assistant Professor, Hospital Medicine, CU Anschutz, Co-Director, Better Together Physician Coaching</i>		MIKE HOLERS, MD <i>Smyth Professor, Rheumatology, CU Anschutz</i>
	JUDY REGENSTEINER, PHD <i>Director, Ludeman Family Center for Women's Health Research</i>		NICK PFEIFER, JD, BS <i>Partner, Smith & Hopen, PA</i>
	HEATHER UNDERWOOD, PHD <i>Entrepreneur, Innovator</i>		MARY TAPOLSKY, PHD <i>Director of Licensing, CU Innovations</i>
10:30 AM - 10:45 AM	BREAK	2:45 PM - 3:00 PM	BREAK
10:45 - NOON	SESSION 2 EMBRACING DIVERSITY TO DRIVE INNOVATION	3:00 PM - 4:30 PM	SESSION 4 FAILURE: THE ENTREPRENEUR'S BEST TEACHER
	BARBARA BAUER, MS <i>President, GlobalSight Partners</i>		SHARON LAKE, MS <i>Entrepreneur, Founder & Board Chair, Coruna Medical, Founder, Preview Medical & Cutagenesis</i>
	CURTIS HENRY, PHD <i>Associate Professor, Immunology and Microbiology, CU Anschutz</i>		STAN LAPIDUS, BSEE <i>Chairman Board of Directors, Mercy BioAnalytics, Binx Health, Mirvie, Board Member, Lucid Dx, Droplet Biosciences, Sunbird Bio & PathAI</i>
	MELANIE JOY, PHARM.D, PH.D, FCCP, FASN <i>Professor, Director of Innovation and Commercialization, CU Anschutz</i>		DAVID PEREZ, BA <i>Non-Executive Chairman, Advanced Instruments & Laborie, Board Member, NeoGenomics & Molnlycke</i>
	ANNE LIBBY, PHD <i>Professor, Emergency Medicine, Vice Chair for Academic Affairs, CU Anschutz</i>		CLAY SMITH, MD <i>Professor, Hematology, CU Anschutz</i>
4:30 PM - 5:00 PM	AFTERNOON COFFEE & CLOSING REMARKS		STEVE VANNURDEN, MBA <i>Associate Vice Chancellor of Biotechnology, CU Anschutz</i>

DAY 2 AGENDA

TUESDAY,
JUNE 11, 2024
AHSB ELLIMAN
CONF CENTER &
BENSON HOTEL

CU ANSCHUTZ
INNOVATION FORUM PRESENTS



IGNITING IMPACT WITH ACADEMIC INNOVATION

Hosted by CU Innovations Startup Toolbox

9:15 AM - 10:00 AM	LIGHT BREAKFAST & WELCOME REMARKS	1:00 PM - 2:30 PM	NETWORKING LUNCH & FIRESIDE CHAT
	TERRI CARROTHERS <i>Executive Vice Chancellor for Administration & Finance, Chief Financial Office, CU Anschutz</i>		JODIE MORRISON, BS <i>CEO & Board of Directors, Q32 Bio, Inc.</i>
10:00 AM - 11:15 AM	SESSION 1 WHEN IS THE RIGHT TIME TO BUILD YOUR BIOMEDICAL COMPANY?		KIMBERLY MULLER, ESQ <i>Executive Director, CU Innovations</i>
	DEMETRIA BOLDEN, PHD, MBA <i>Assistant Professor, Medicine, CU Anschutz, Associate Director, I-Corps</i>	2:30 PM - 2:45 PM BREAK	
	ROBIN DETERDING, MD <i>Chief Ped Pulmonary & Sleep Medicine, CU Anschutz, Medical Director, Breathing Institute, CHCO, CEO, CMO & Co-Founder, Now Vitals</i>	2:45 PM - 3:45 PM SESSION 3 COLLABORATOR MATCHMAKING: STRATEGIC ALLIANCES	
	MIKE HOLERS, MD <i>Smyth Professor, Rheumatology, CU Anschutz</i>		ZACH CONRAD, BA <i>Principal Designer & Partner, K1C Consulting LLC</i>
	SHARON LAKE, MS <i>Entrepreneur, Founder & Board Chair, Coruna Medical, Founder, Preview Medical & Cutagenesis</i>		HEATHER GILMARTIN, PHD, NP <i>Associate Director, Dissemination & Implementation Research Core, CCTSI</i>
	JIM LAMBERT, PHD <i>Associate Research Professor, Pathology, CU Anschutz, President & Founder, Vona Oncology</i>		LORI JONES <i>President & CEO, Avocet Communications, Member, Forbes Agency Council</i>
11:15 AM - 11:30 AM	BREAK		
11:30 AM - 12:45 PM	SESSION 2 FUNDING YOUR BIOMEDICAL DISCOVERIES		KEVIN NOBLE, MBA, MS <i>Director, Life Sciences Incubator, Client Director, Innosphere Ventures</i>
	GALI BALER, PHD <i>Managing Director, Strategy & Operations, CU Innovations</i>		AMY WEDEKING SHANNON, MBA, BA <i>Founder, CaliberOne Solutions, LLC</i>
	ELYSE BLAZEVOICH, MS, BA <i>President & CEO, Colorado BioScience Association</i>	3:45 PM - 4:30 PM CLOSING REMARKS & OPEN NETWORKING	
	RAMA HARIS, MBA, BS <i>Advanced Industries Sr Manager, Colorado Office of Economic Development & International Trade</i>	5:15 PM - 8:00 PM VENTURE SHOWCASE 21+ CELEBRATION AT THE BENSON	
	KEVIN NOBLE, MS, BA <i>Director, Life Sciences Incubator, Client Director, Innosphere Ventures</i>	5:15-5:30 FOOD & DRINKS 5:30-6:45 STARTUP PITCHES <i>*by application</i> 6:45-7:00 VOTING	
	PRAFUL SHAH, PHD, MBA <i>Board of Directors, PharmaJet & Alliance for Collective Action</i>	7:00-7:15 AWARDS CEREMONY 7:15-8:00 FOOD & DRINKS	
		CU STARTUP TEAMS NOWVITALS <i>Robin Deterding, MD</i> VONA ONCOLOGY <i>Jim Lambert, PhD</i> PEARL SCIENTIFIC <i>Traci Lyons, PhD</i> AZODENT <i>Devatha Nair, PhD & Mike Schurr, PhD</i> VINĀŚA ONC <i>Sujatha Venkataraman, PhD</i> ONCOPATCH <i>David Westerly, PhD</i> MCS <i>Elyse Blazeovich, MS, BA & Lily Elizabeth Feldman, BS, PHD Candidate</i> JUDGES <i>Gali Baler, PhD, Sharon Lake, MS, Jodie Morrison, BS, & Praful Shah, PhD, MBA</i>	

DAY 3 AGENDA

WEDNESDAY,
JUNE 12, 2024
AHSB ELLIMAN
CONF CENTER

CU ANSCHUTZ
INNOVATION FORUM PRESENTS

ROCKY MOUNTAIN BIOTECH SYMPOSIUM



Hosted by Academia Industry Alliance (AIA)

8:30 AM
- 9:30 AM

BOOTH SETUP & LIGHT BREAKFAST

9:30 AM
- 10:30 AM

CAREER PANEL



IVY BROWN, MSC
*Senior Life Science Specialist II,
Avantor*



REBECCA HARTSOUGH MS, BA
*Director Strategic Accounts, Vaccines,
PPD*



YEVGENIY IZRAYELIT, PHD
Director of Biology, OnKure Therapeutics



JOHN KELLEY, BA
*Chair and Executive Director,
CereHealth*



KATHERINE LEE, PHD
*Senior Medical Science Liaison,
Epilepsy, Takeda Pharmaceuticals*



KIM THOMAS, PHD
*Assistant Investigator,
Vitalant Research Institute*

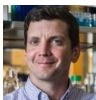
SCIENTIFIC SHORT TALKS

10:30 AM
- 11:30 AM

THERAPEUTIC DISCOVERY

- OR -

MEDICAL DEVICES & DIAGNOSTICS



JOEL BASKEN, PHD
Director of Operations, Enveda Biosciences



AARON KRUEGER, PHD
*Senior Scientist, Drug Product
Development, Umoja Biopharma*



SASCHA STRAIT, PHD
*Research Scientist, Pharmacology,
OnKure Therapeutics*



TYLER MCCANN, PHD
*Principal Medical Science Liaison, Daiichi
Sankyo*



MAXIMO DE ACHAVAL, MS
*Sr Product & Market Development Manager,
CONMED Corporation*



TYLER MATHENY, PHD
Subject Matter Expert, SOPHiA GENETICS



MARIA NAVAS-MORENO, PHD
CEO & Co-Founder, illumifyDx

11:45 AM
- 12:30 PM

PHARMACOLOGY

- OR -

INTEGRATIVE BIOTECH SOLUTIONS



KIMBERLY CASALVIERI, PHD
*Senior Scientist II, Process Chemistry,
Cambrex*



MARISSA MCKERCHER, PHD
*Senior Scientist Group Lead,
KBI Biopharma*



JOSEPH MIKULIN, PHD
Laboratory Director, HemoGenix

TO BE ANNOUNCED

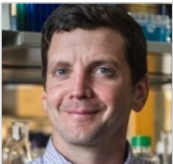
12:30 PM
- 2:30 PM

LUNCH & NETWORKING FAIR

PRESENTERS BIOGRAPHIES



GALI BALER, PHD is the Managing Director of Strategy & Operations at University of Colorado, CU Innovations since 2016, managing the \$110M CU Healthcare Innovation Funds and various grant programs, bridging internal venture development and external partnerships. His efforts in new venture development have seen university spin-outs raise over \$200M. Formerly, at Northwestern University, he invented dermatological disease monitoring tech, co-founded Sintact Medical Systems, and assisted angel investors as Assistant Director of Venture Capital Analytics at Rockies Venture Club. Gali holds a PhD in Biomedical Engineering from Northwestern, a Bachelors in Materials Science Engineering from Cornell, and a management certificate from Kellogg School of Management.



JOEL BASKEN, PHD After completing his PhD at the University of Colorado Boulder, Joel led the lab buildout and assay development of a first-to-market product at a startup CRO. In his current role as the Director of Operations at Enveda Biosciences, he has overseen the development of multiple new R&D facilities.



BARBARA BAUER, MS is an accomplished international executive with a diverse background spanning executive roles in multinational corporations, entrepreneurship, and nonprofit leadership. Noteworthy positions include Executive Director of Boardbound by the Women's Leadership Foundation, Executive Director of the Women's Investor Network (WIN) for Rockies Venture Club, and Executive Director, Myanmar, for the Partnership for Change (PfC). Alongside founding ventures like GlobalSight Partners and Silk and Stones Travel, she has spearheaded initiatives like the ABLE Center for Women Entrepreneurs at the University of Denver. With academic credentials in Physics and recognition such as induction into the Women In Technology International Hall of Fame and the Colorado Software Industry Association's Technology Supporter of the Year, Barbara's expertise and contributions are highly regarded.



ELYSE BLAZEVOICH, MS, BA leads the Colorado BioScience Association (CBSA) in fostering a collaborative environment for the state's life sciences community. With extensive experience in life sciences and deep knowledge of Colorado's business landscape, she drives CBSA's strategic initiatives alongside the Board, team and partners. Prior to CBSA, Elyse co-founded and led Securisyn Medical, securing significant funding, developing a robust product pipeline, and achieving key regulatory milestones. Her advocacy efforts have supported Colorado's advanced industries, securing grants and tax credits. Elyse also has a strong background in investor relations and nonprofit leadership, holding degrees in biology and organizational leadership.



DEMETRIA BOLDEN, PHD, MBA is an Assistant Professor in the School of Medicine, Division of General Internal Medicine at the University of Colorado School of Medicine, Anschutz Medical Campus. She has a PhD in communication studies from the University of Georgia, an MBA from the New York Institute of Technology, and a BS in marketing from Hampton University. She is a communication scientist, dissemination and implementation (D&I) researcher, racial disparities researcher, as serves as a catalyst for organizational healthcare innovation development. Her research addresses racial disparities in cardiovascular disease outcomes, chronic disease self-management, and the application of mixed methods in designing pragmatic trials. In addition, Dr. Bolden is the Associate Director for the Innovation Corps (I-Corps) at CCTSI program which is a team-based 3-week short course designed for faculty, staff and students guiding them through the early stages of customer discovery where they can test the business model hypotheses for their technology or idea.



VIRGINIA BORGES, MD, MMSC is a Professor of Medicine with Tenure at the University of Colorado Denver and holds the Robert C. and Patricia Young-Connor endowed Chair in Young Women's Breast Cancer. Dr. Borges is the Deputy-Head of the Division of Medical Oncology, the Director of the Breast Cancer Research Program and the Director for the Young Women's Breast Cancer Translational Program. Her focus is on research in Young Women's breast cancer, the interaction of breast cancer and pregnancy and the development of novel drugs for breast cancer.

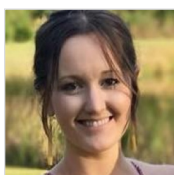


IVY BROWN, MSC is a Life Science Specialist for VWR (Avantor) and serves as scientific sales support for a broad portfolio of products within cell and molecular biology. Before joining the industry, she worked for ten years on the bench in immunology and virology labs where she honed the skills that would be essential for her current role. She served as CFO of the CU Academic Industry Alliance from 2018-2020; the connections she made through the AIA led her to her current position, where she has been extremely successful. Originally from New Mexico, she obtained her undergrad in biology at UNM before heading to Belgium where she studied for her master's degree in Molecular Biology specializing in human health at the University of Brussels. She also speaks four languages and is the singer for an indie rock band.

PRESENTERS BIOGRAPHIES



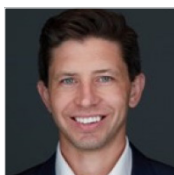
TERRI CARROTHERS is the Executive Vice Chancellor of Administration and Finance, Chief Financial Officer of the University of Colorado Anschutz Medical campus. She has oversight of Facilities Management/Institutional Planning, Financial Services/Controller, Grants & Contracts, Budget, Information Strategy and Services, Human Resources, Police & Emergency Services, and Campus Strategy, some of which are on dual campuses. This involves oversight of a budget of nearly \$3 billion for the CU Anschutz campus, playing a pivotal role in the university's program development along with Chancellor Don Elliman. With a career spanning back to 1978, at the University of Colorado Hospital, Carrothers has held various administrative positions, including Associate Dean for Administration and Finance and Chief of Staff of the CU School of Medicine, Administrator for Endocrinology, Metabolism & Diabetes. She brings extensive financial expertise to various boards, committees, enriching discussions with her deep institutional knowledge.



KIMBERLY CASALVIERI, PHD has her B.S. in Biochemistry and B.A. in Chemistry from the College of Charleston in 2011. She spent time working in formulation development at Johnson & Johnson and synthetic organic chemistry at MitoChem Therapeutics prior to completing her Ph.D. in Pharmaceutical Sciences at the University of Colorado Anschutz Medical Campus in 2020. Since her Ph.D., she has worked as a process chemist at Cambrex Corporation in Longmont, CO. In her role she is responsible for optimizing synthetic routes to active pharmaceutical ingredients for purity, safety, reproducibility, scalability, and yield. As a project lead, she is responsible for presenting work both internally and externally to clients and works directly with manufacturing colleagues to support the successful production of active pharmaceutical ingredients on the gram to kilogram scale.



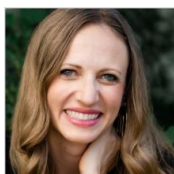
ZACH CONRAD, BA a seasoned technical leader and product innovator with over 20 years of experience in multifaceted product development. Zach excels in creative problem-solving and cost-effective design processes, ensuring efficient product cycles from prototype to full-scale manufacturing. His exceptional 3D visualization skills and expertise in Industrial Design and Design For Manufacture bring concepts to life. Zach is also skilled in supporting intellectual property deployment and managing creative teams, fostering innovation and collaboration. Dedicated to excellence, he continues to drive impactful solutions in the dynamic field of product innovation.



MAXIMO DE ACHAVAL, MS received his B.S. in Mechanical Engineering from the University of Colorado Boulder and M.S. in Bioengineering from University of Colorado Denver. He then worked as a quality engineer at DLSS, Baxter International Inc, and Zimmer Biomet before joining CONMED Corporation, global medical technology company. He is now the Senior Product & Market Development Manager at CONMED Corporation.



ROBIN DETERDING, MD transforms healthcare in Colorado and around the world for children as an executive healthcare administrator, serial entrepreneur and internationally recognized pediatric pulmonologist is Dr. Robin Deterding's vision. As an entrepreneur who has founded three startups, EvoEndo, Earables & Now Vitals, she has advised organizations and evaluated over 100 companies for success, she knows it is an incredible time to be in healthcare. Dr. Deterding see such potential for transformational disruption as a physician who treats children and family from around the world and as an executive administrator of the largest breathing program in the country at Children's Colorado. Her goal is to lead and inspire teams of talented diverse people to create a better future through innovation, research, advocacy, education and exceptional clinical care.



TYRA FAINSTAD, MD is an Associate Professor of Medicine at the University of Colorado where she is a primary care doctor and resident clinic director for Internal Medicine trainees. She has a scholarship interest in learner-centered feedback, assessment bias, and psychologically safe educational environments. She is also a certified professional coach and co-director of an online group coaching program called Better Together Physician Coaching. She is a recovering approval addict, on a never ending path to self-awareness. Her purpose now is to create space for change through helping doctors and trainees access inner validation rather than relying on external praise.

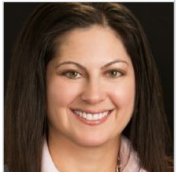


LILY ELIZABETH FELDMAN, BS, PHD CANDIDATE is a Senior Venture Fellow at CU Innovations. Since 2022, she has run the Startup Toolbox microgrant program, building infrastructure to create a sustainable source of funding for biomedical startups at CU Anschutz. Lily graduated summa cum laude with a B.S. in Biochemistry, minors in Chinese and Psychology, from the University of New Mexico in 2020. She is now a PhD Candidate in the Pharmacology and Molecular Medicine training program at CU Anschutz, where she weaves together interdisciplinary techniques to tackle the complex clinical problem of chemotherapy resistance. Lily's multifaceted expertise provides a framework for research and business development activities, driven by her passion for patient impact through biomedical innovation.

PRESENTERS BIOGRAPHIES



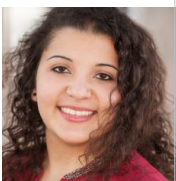
THOMAS FLAIG, MD a medical oncologist at the University of Colorado since 2003, holds various administrative roles within the School of Medicine, cancer center, and UCHealth. In March 2020, he was appointed vice chancellor of research for the CU Denver | CU Anschutz Medical Campus. Dr. Flaig has extensive experience in clinical and translational research, leading multi-center clinical trials and overseeing Phase I, II, and III studies. He directs a translational lab focused on therapeutic and biomarker development in bladder and prostate cancer. Nationally, he serves on the National Cancer Institute's bladder cancer task force, chairs the NCCN bladder cancer committee, and co-chairs the NCTN SWOG Bladder Committee.



BROOKE FRITZ, JD, MA has over fifteen years of experience drafting and negotiating complex technology transactions and counseling clients as a valued business advisor. She focuses on her clients' legal and business needs in connection with life sciences and technology transactions. Her clients include multinational public companies and start-ups financed by venture capital firms in the IT, telecommunications, services, health care, business process outsourcing, and other technology industries.



HEATHER GILMARTIN, PHD, NP is a health services researcher and dissemination & implementation scientist at the Denver/Seattle Center of Innovation at the Rocky Mountain Regional Veteran Health Administration Medical Center in Aurora, Colorado. Her research centers on optimizing healthcare culture for employee engagement and patient safety. She is an associate professor at the University of Colorado, School of Public Health and associate director of dissemination and implementation at the Colorado Clinical and Translational Sciences Institute.



RAMA HARIS, MBA, BS is an advocate for innovators and entrepreneurs, leading the Advanced Industries Accelerator Program for the Colorado Office of Economic Development and International Trade (OEDIT). As Senior Manager she develops early stage and start-up Colorado companies, while enhancing the State's advanced industries through partnerships with Colorado technology transfer offices and advanced industry stakeholders. She also oversees OEDIT's export grant programs which are helping Colorado to become a major exporter in the global market.



REBECCA HARTSOUGH MS, BA loved science from childhood, majored in Biology at Oberlin College, then worked as a lab tech for 2 years at University of Michigan in Human Genetics. After getting her MS from Baylor College of Medicine, she started in sales at REI during the recession, while applying for many sales jobs in biotech. After 6 months at VWR on this campus, CU Boulder and NJH, she started at Promega corp and stayed for 11 years, covering the mountain west, and focusing on reference labs. She then made the jump to CROs, selling services for IVD and medical devices. As of October 2023, she's now at PPD, selling the immunology assays needed for vaccine clinical trials to all major vaccine companies in the US and APAC.



CURTIS HENRY, PHD holds multiple roles at the University of Colorado Cancer Center and CU Anschutz, including Deputy Associate Director of Diversity, Equity, Inclusion, and Access, Associate Professor of Immunology & Microbiology, and The Margaret Turley Grohne Chair in Translational Cancer Research. He earned his degrees in Molecular Biology and Chemistry from Florida A&M and a doctorate in Immunology from Wake Forest. Recognized for his research with grants like the NCI-funded K01 and awards such as the American Cancer Society Junior Faculty Achievement Award, Dr. Henry has authored numerous publications and holds patents. His lab investigates how cancer-associated comorbidities enhance cancer, aiming to improve chemo- and immune-based therapies for high-risk patients.



MIKE HOLERS, MD the Smyth Professor of Rheumatology and Director of Faculty Ventures at CU Innovations, is a highly respected academic physician-scientist at the Anschutz Medical Campus (AMC). With over two decades of experience in technology transfer and commercialization, he's known for co-founding four companies translating laboratory discoveries into real-world applications, including therapeutics programs reaching human clinical trials. Formerly Division Head of Rheumatology at AMC, he built a renowned team. His research focuses on the complement system's role in autoimmune diseases, leading to significant therapeutic developments. Recognized with numerous awards and named lectureships, including the 2008 American College of Rheumatology Basic Research Award, Dr. Holers continues to advance rheumatology research and training through leadership roles and contributions to organizations like ASCI and AAP.



YEVGENIY IZRAYELIT, PHD is the Director of Biology at OnKure Therapeutics. He has previously held drug discovery roles at Genentech and Novartis, focusing on Oncology and Virology. His start in biotech was at ViewPoint Therapeutics, a biotech startup developing a small molecule treatment for cataracts. Yevgeniy's educational background includes a postdoctoral position at Brown University, a PhD in Chemistry and Chemical Biology from Cornell University and a BA in Biochemistry from Vassar College. Outside of drug discovery, Yevgeniy works to foster collaboration in the local biotech community.

PRESENTERS BIOGRAPHIES



LORI JONES president and CEO of Avocet Communications, is a visionary leader with deep insights into customer motivations. She has represented over 1,000 start-ups, leading national and global campaigns that shifted public opinion and boosted revenue. As the host of StrategyCast, she engages with top business and marketing leaders to uncover insights that challenge conventional thinking. Her work with the CU Anschutz SPARK program highlights her commitment to innovation through strategic education. In 2021, she was inducted into the Boulder County Business Hall of Fame for her leadership in communications and marketing. Avocet accelerates growth by leveraging innovative advertising, media relations, content creation, and digital strategies to build lasting customer connections.



MELANIE JOY, PHARM.D, PH.D, is a tenured professor at CU Anschutz, serving as Director of Innovation and Commercialization in the Skaggs School of Pharmacy. She previously spent 16 years at UNC Chapel Hill Kidney Center, directing clinical development of therapeutics. Dr. Joy is a founder of Katharos, Inc., a start-up developing technologies for kidney diseases. Over her 30-year career, she has contributed toward development of multiple drugs and devices which have been commercialized. Dr. Joy is engaged with numerous innovation programs at CU, including SPARK/REACH Director of Education, Chancellor's Committee on Innovation, and President's Workgroup on Innovation and Entrepreneurship. She also established and leads the Academic Center of Excellence for Model-Informed Drug Development, a public-private partnership with Certara, Inc. Dr. Joy's laboratory is NIH funded and focused on biomarkers, kidney injury, precision medicine, and preclinical and clinical development of therapeutics and medical devices.



JOHN KELLEY, BA is the Chair and Executive Director of CereHealth, a leading AI medical analytics company in Colorado. He was previously Chairman, President, and CEO of McDATA Corp until its acquisition by Brocade in 2007, and served as Executive VP of Networks at Qwest Communications after its acquisition of US West, where he held various executive roles. Earlier, he was Area President for Mead Corporation's Southwest Region and VP/GM of its Industrial Products Division, with senior roles at NBI Corp., Alcatel/Friden, and Xerox. John has served on the boards of McDATA, Polycom, Emulex, Captaris, and several private companies. He supports non-profits, especially those aiding women executives. He holds a B.S. in Business Management from the University of Missouri, St. Louis, completed executive programs at Stanford Law School, served in the US Army, and received an honorary Doctorate of Humane Letters from Heidelberg University in 2010.



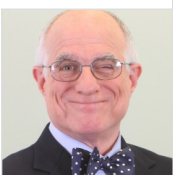
AARON KRUEGER, PHD earned his doctorate in Biochemistry and Molecular Genetics at the University of Colorado Anschutz Medical Campus. He completed a post-doctoral fellowship at the CU Skaggs School of Pharmacy, specializing in sub-visible particles in protein therapeutics. He then worked as a scientist at KBI Biopharma, focusing on forensic particle analysis and biotherapeutic stability. Currently, he is a Senior Scientist at Umoja Biopharma, concentrating on drug product compatibility, stability, and process improvements for a novel lentiviral vector drug product.



SHARON LAKE, MS with over 30 years of experience, Sharon's extensive entrepreneurial background and strong operational experience provides a comprehensive skill set to successfully lead businesses and projects. She has been a member on the founding team of over 15 MedTech start-ups – 6 of which were acquired. Over the course of her career, Sharon has served as CEO, and executive in Business Development, Marketing, Operations, and R&D. For 8 years she was an executive at InCube Labs, a medical device incubator, and has held positions in engineering, marketing and operations at Guidant and Medtronic. Sharon contributed intellectual property to multiple start-ups and holds 16 issued patents and 25 published patent applications.



JIM LAMBERT, PHD is an Associate Professor of Research in Pathology with over 30 years of cancer research experience. He is the founder and president of Vona Oncology, a biopharma startup from the University of Colorado Anschutz Medical Campus. His team is developing novel small molecule drugs for aggressive cancers like triple-negative breast cancer, ovarian cancer, and melanoma. Vona Oncology's lead compound, VDX-431, has shown strong efficacy in killing cancer cells both in vitro and in vivo. The company has received an NIH NCI SBIR Fast-Track award and a Colorado Advanced Industry Accelerator grant to advance VDX-431 toward clinical trials and further business development.



STAN LAPIDUS, BSEE an inventor and entrepreneur, holds numerous positions in healthcare and medical technology boards while advising CU Innovations. As founding CEO of three medical diagnostics companies, he notably led Cytac Corp., revolutionizing cervical cancer detection with the ThinPrep Pap test, now at the Smithsonian. He also founded EXACT Sciences, pioneering colorectal cancer detection with Cologuard, one of the fastest-growing tests in diagnostics history. Holding 37 patents primarily in early cancer detection methods, Stan served as an MIT instructor and was elected Fellow of the American Institute of Medical and Biological Engineering. He graduated from Cooper Union with a BS in electrical engineering.

PRESENTERS BIOGRAPHIES



KATHERINE LEE, PHD earned her PhD in Emerging Infectious Diseases from the Uniformed Services University in Bethesda, MD, and an MS in Biochemistry from the University of Maryland at Baltimore. She spent close to 10 years as an Assistant Professor in the Department of Pediatrics-Infectious Diseases at the University of Colorado, where she led a research program focused on varicella-zoster virus pathogenesis. Since transitioning to the pharmaceutical industry, Dr. Lee has devoted most of her time to being a Medical Science Liaison supporting the vaccine portfolios at GSK, Sanofi and Takeda. Currently, she is a Senior MSL on the Epilepsy team at Takeda.



ANNE LIBBY, PHD is a tenured Professor and Vice Chair for Academic Affairs in the Department of Emergency Medicine at CU School of Medicine. Holding a PhD in economics from Washington University in St. Louis and a postdoctoral fellowship from UC Berkeley, she has been with CU since 2000. Nationally recognized for her research on healthcare systems, particularly in behavioral health and underserved populations, she has over 100 publications. Dr. Libby has led numerous funded projects, co-founded the Education, Training, and Career Development Core of the Colorado Clinical and Translational Sciences Institute, and trained thousands globally, including 17,000 in her online research management course. She also serves as senior faculty and scientist training lead for the CU Center for COMBAT Research.



TRACI LYONS, PHD earned her BA in Molecular, Cellular, and Developmental Biology from CU Boulder in 1999 and her PhD in Biophysics and Genetics from the University of Colorado Health Sciences Center in 2006. Her postdoctoral research in Medical Oncology revealed that postpartum breast tissue characteristics promote tumor growth and invasion, published in Nature Medicine. Now faculty, her lab focuses on neuroimmune and lymphatic signaling pathways in tumor cells, identifying SEMA7A as a biomarker for postpartum breast cancer recurrence and developing a monoclonal antibody targeting SEMA7A. Dr. Lyons is also co-founder and Chief Scientific Officer of Pearl Scientific, LLC, a company dedicated to developing targeted therapies for women's health.



ADRIENNE MANN, MD is an Assistant Professor of Hospital Medicine at the University of Colorado and Rocky Mountain Regional VA Medical Center, and an Associate Program Director for the CU Internal Medicine Residency Program. She is a Master Certified life coach and Co-Director of Better Together Physician Coaching, CU-based life coaching program serving medical students, residents, fellows, and clinicians in practice nationwide. Her scholarly interest is in the development, application, and study of coaching methodology in sustainable programs to promote resilience and wellbeing by encouraging a growth mindset and creation of individualized definitions of success.



TYLER MATHENY, PHD has his B.S. in Biochemistry and B.A. in Music from the University of Tulsa. He then earned his Ph.D. in Biochemistry from University of Colorado Boulder. He then had a post-doctoral fellowship with Dr. Roy Parker in Boulder before starting as a research scientist at ArcherDX, Inc and transitioning into a senior research associate position at University of Colorado Anschutz. Tyler now works as a Subject Matter Expert for SOPHiA Genetics, which created a cloud-based platform capable of analyzing data and generating insights from complex multimodal data sets and different modalities.



TYLER MCCANN, PHD is a Principal Medical Science Liaison on the Lung/GI Oncology MSL Team at Daiichi-Sankyo. Tyler covers the US Great Plains region with responsibilities including cultivating and maintaining relationships with Key External Experts and investigators, conducting scientific exchange, and collaborating with internal stakeholders. Prior to joining Daiichi-Sankyo, Tyler was an MSL with Alkermes for 4 years, supporting the development of nemvaleukin alfa (modified IL-2). Tyler has 10+ years of academic research experience in Molecular Biology and Oncology, graduating from Vanderbilt University with a PhD in Biomedical Research and completing a Post-Doctoral Fellowship at CU Anschutz.



MARISSA MCKERCHER, PHD received B.S. degrees in Biology and Chemistry at the University of Denver and then earned her Ph.D. in Biochemistry at the University of Colorado Boulder. She joined Elion Labs in 2017 as a scientist, where she specialized in liquid chromatography and mass spectrometry analysis to support biotherapeutic primary structure and glycan characterization. Following the company's acquisition by KBI Biopharma in 2019, Marissa progressed to a senior scientist role where she now manages a team of staff and leads product characterization studies that enable the commercialization of biological therapeutics.



MICHAEL MCMURRAY, PHD is an Associate Professor of Cell and Developmental Biology in the School of Medicine at the Anschutz Medical Campus. Research in the McMurray lab mostly focuses on identifying molecular mechanisms underlying the assembly of macromolecular protein complexes, particularly the septin family of proteins. We broadly use the budding yeast *Saccharomyces cerevisiae* as an experimental tool to explore open questions in molecular biology.

PRESENTERS BIOGRAPHIES



JOSEPH MIKULIN, PHD graduated with his Ph.D. in Microbiology from Miami University in 2022 and worked for MIMEDX as a Research Scientist investigating the immunomodulatory effects of human placental allografts during wound healing. Now he's the Laboratory Director of HemoGenix, conducting studies to determine the effects of test compounds on characteristics of various stem cell populations.



DOREEN MOLCK, MS is a Senior Licensing Manager with CU Innovations. She specializes in marketing and licensing of innovative technologies in order to transition them from lab to market. Previously, Molck was a licensing coordinator at the National Renewable Energy Laboratory, where she focused on marketing technologies and managing NREL's software portfolio. Doreen has worked as a research assistant at the University of Colorado in the Department of Pediatric Hematology and Oncology. Doreen holds a Master of Science in Applied Chemistry and a Bachelor of Arts in Biochemistry.

KEYNOTE 6/11



JODIE MORRISON, BS is the CEO and Board Member of Q32 Bio, Inc., with extensive leadership experience in both startups and public biopharmaceutical companies. In her last operating role prior to Q32 as CEO of Cadent Therapeutics, she oversaw its sale to Novartis in 2020. She previously served as a Venture Partner at Atlas Venture, interim CEO of Keryx Biopharmaceuticals, COO of Syntimmune, Inc., and President and CEO of Tokai Pharmaceuticals which collectively included multiple M&As and an IPO. She founded The CEO Forum and sits on the boards of Rectify, Inc. and Life Science Cares. She holds a BA in Neuroscience from Mount Holyoke College, completed business training at MIT Sloan School of Management, and earned clinical research certification from Boston University School of Medicine.



KIMBERLY MULLER, ESQ. is the Executive Director of CU Innovations She leads innovation efforts, including investing, company creation, strategic partnerships, and licensing, and manages several funds, including a nearly \$110 million venture fund. She has established significant industry collaborations in AI and drug development. Previously, as Deputy Director of the Yale Entrepreneurial Institute, she helped launch over 70 ventures, raising over \$5 billion. Muller has founded and sold companies in biotech, tech, and clean energy, such as Curagen Corporation, 454 Life Science, and Arbor Fuel. She began her career as a patent attorney and holds a graduate degree in Genetics and a law degree from the University of Connecticut School of Law.



DEVATHA NAIR, PHD is an Associate Professor at the University of Colorado School of Dental Medicine, specializing in the development of responsive or 'smart' polymers for dental and surgical biomaterials. She holds a PhD in Mechanical Engineering and completed postdoctoral training in Chemical and Biological Engineering. Her innovative work has resulted in over 30 publications, five granted patents, and 23 patent applications. She has secured various grants, including the NIH-NIDCR and the Anschutz Acceleration Initiative award. Dr. Nair's research focuses on antibacterial coatings and smart materials with significant potential for dental and biomedical applications, earning recognition such as the NIH Proof of Concept Network Innovator award in 2021.



MARIA NAVAS-MORENO, PHD graduated with a PhD in Physics from the University of Utah. She completed two post-doctoral fellowships, one focused on neuronal circuits and the other in the Center of Biophotonics. She is an entrepreneur, as well as a scientist, and is the co-founder of Lever Photonics, which is a team of physicists and engineers specialized in microscopy and Raman spectroscopy with the goal of helping their clients with their custom microscopy needs. Maria is now the CEO and co-founder of illumifyDx, a Colorado-based liquid biopsy diagnostics company striving to be the leader in optical spectroscopy-based clinical diagnostics.

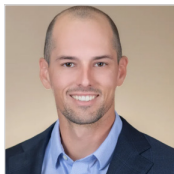


KEVIN NOBLE, MS, BA is the Director of the Life Sciences Incubator at Innosphere Ventures, overseeing a U.S. Economic Development Administration-backed program to accelerate life science product commercialization across six states. He also serves as a Client Director at Innosphere Ventures, collaborating with CU Innovation companies. With a 30-year BioPharma career, Kevin has held key roles at Genentech, Roche, Abbott, and Bristol-Myers Squibb, and helped cultivate the Silicon Valley startup ecosystem at Genentech. He co-founded Red Rock Rebels, serves on the Boards of The Big Wild and the Colorado Bioscience Association, and holds degrees from Northwestern University and the University of Illinois.



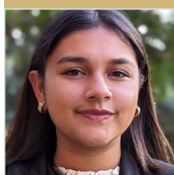
DAVID PEREZ, BA with over 40 years of executive leadership in medical device and healthcare services, serves as Non-Executive Chairman, Board Member, Advisor, Volunteer, and Mentor across various organizations. Retired as President and CEO of Terumo BCT after 18 years, he oversaw the company's growth from \$160M to \$1B in revenue, expanding globally and achieving significant growth under private equity ownership. Notably, at CaridianBCT, he facilitated an 85% increase in company value, leading to a \$2.6B exit to Terumo Corporation. Perez holds a degree from Texas Tech University and actively contributes his expertise to numerous public, private equity, and non-profit boards, advancing healthcare and entrepreneurship.

PRESENTERS BIOGRAPHIES

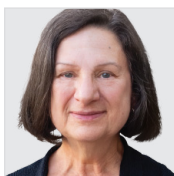


NICHOLAS PFEIFER, JD, BS is an intellectual property attorney at Smith & Hopen. He represents universities, companies, and independent inventors, both domestic and foreign. Nick's practice extends to all aspects of intellectual property law, including patents, trademarks, and copyrights. Although Nick has particular expertise in mechanical and aerospace engineering, his practice spans across a broad scope of technologies, including medical devices, biotechnology, and software.

KEYNOTE 6/10



GITANJALI RAO recognized as America's Top Young Scientist, winning an EPA Presidential award for her lead contamination detection tool. She's also known for inventing "Epione" for early opioid addiction diagnosis and "Kindly," an AI-based anti-cyberbullying service. She's been featured on Forbes' "30 Under 30 in Science" and named TIME's "Top Young Innovator" and "TIME Kid of the Year". Rao has inspired over 85,000 students globally through STEM workshops and authored the book "Young Innovator's Guide to STEM". As a UNICEF Youth Advocate, she's committed to using science for social good, receiving humanitarian awards like the Muhammed Ali Humanitarian and Martin Luther King Beloved Community award. Currently a freshman at Massachusetts Institute of Technology, Rao continues to push boundaries in innovation and activism.



JUDY REGENSTEINER, PHD is the Director of the Ludeman Family Center for Women's Health Research and a Distinguished Professor of Medicine at the University of Colorado Anschutz Medical Campus, holding the Judith & Joseph Wagner Chair in Women's Health Research. With over 30 years of funding, she specializes in the cardiovascular effects of diabetes in women and is recognized for her work on peripheral arterial disease. Dr. Regensteiner has authored over 180 research publications and serves as Principal Investigator for the NIH's BIRCWH grant and an NIH R01 focused on diabetes and cardiovascular health. She served two full terms on the NIH's Advisory Committee on Research on Women's Health, leading interdisciplinary research on women's health and sex differences.



MIKE SCHURR, PHD is an Associate Professor of Immunology and Microbiology with over 30 years of experience in bacterial pathogenesis research. He's also the founder and president of Azodent, a startup at the University of Colorado Anschutz Medical Campus focused on developing novel small molecules to disrupt biofilms. Azodent's lead compound, Acrylated Hydroxy-Azobenzene (AHA), has shown strong efficacy against *Streptococcus* spp. and Gram-negative pathogens in both in vitro and in vivo studies. The company has received awards for its innovative approach, including 3D printing dental materials with AHA. Azodent aims to complete studies for a 510K submission and become a leader in clinical materials development.



PRAFUL SHAH, PHD, MBA is an angel investor who has invested in 75 start-up companies including several healthcare companies. He has been a mentor, an advisor or on the Board of several organizations. Currently he is on the Board of a health-care company, PharmaJet, and a non-profit organization, Alliance for Collective Action. He spent over thirty years as a scientist and an executive in the Research and Development departments of the pharmaceutical and the biotechnology companies. His educational background includes a B.S. in Chemistry, an MBA in Finance, and a Ph.D. in Pharmaceuticals.



CLAY SMITH, MD a Professor in Hematology at the University of Colorado (CU), also serves as the Medical Director of CU Innovations and previously directed the Blood Disorders and Cell Therapies Center at UCHealth and CU. With a background spanning Sloan Kettering, Duke, Moffitt, and the BC Cancer Agency, he has held various clinical and translational leadership roles. Smith's research focuses on developing novel therapies for blood cancers using omics technologies and computational tools. He has authored over 160 manuscripts, secured numerous grants, and holds multiple patents. Smith has founded several companies and received accolades such as the CU Department of Medicine's Innovator of the Year award. Currently, he is the Chief Medical Officer of OncoVerity and the Chief Innovation Officer of RefinedScience.



SASCHA STRAIT, PHD earned his B.S. in Biology at UC Davis and completed his PhD in Pharmacology at the University of Colorado Anschutz Medical Campus. His research focused on TGF β signaling's impact on immunotherapy in head and neck cancer. He has held various positions, including lab manager at the University of Washington and Fred Hutchinson Cancer Research Center, and scientific writer at Scientific and Medical Affairs Consulting, LLC. Currently, he is a pharmacology research scientist at OnKure Therapeutics, managing ADME and PKPD/efficacy studies and optimizing in vivo drug properties for materials with in vitro activity.



MARY TAPOLSKY, PHD directs licensing at CU Innovations, evaluating new technologies for commercial potential, managing patent prosecution, and negotiating licenses. With over a decade in technology transfer and twenty years validating commercial potential, she brings formidable expertise. Formerly at the University of Louisville, she taught entrepreneurship and developed successful startup programs. Combining academic and biotech startup experience, Mary holds a chemistry doctorate from the University of North Carolina at Chapel Hill and Lean LaunchPad certification. She received the 2017 EnterpriseCorp Award for leadership in Louisville's entrepreneurial community.

PRESENTERS BIOGRAPHIES



KIM THOMAS, PHD earned her B.S. in Biochemistry and Molecular Biology from California Lutheran University and her Ph.D. in Microbiology/Immunology at the University of Alabama Birmingham. She completed postdoctoral positions at UCLA and Washington University in St Louis before becoming a Senior Scientist and Instructor in Pediatric Critical Care. Currently, she serves as an Assistant Investigator at Vitalant Research Institute with adjunct faculty appointments at UCSF and UC-AMC. Her research focuses on advancing personalized precision transfusion medicine.



HEATHER UNDERWOOD, PHD is a medical device and health technology entrepreneur with expertise in computer science, global health, and human-centered design. She completed her Ph.D. at the University of Colorado Boulder's ATLAS Institute, developing clinical decision support systems for midwives and nurses in Kenya. Heather's entrepreneurial experience includes founding medical device startups and co-founding Inworks, an interdisciplinary initiative at the University of Colorado Denver. She was selected for the 2018-2019 Stanford Biodesign Fellowship and served as CEO of a pediatric gastroenterology company from 2020-2023. Currently, she is a consultant and fractional CEO for medical device startups.



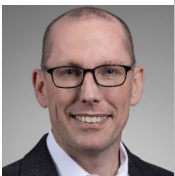
STEVE VANNURDEN, MBA is the Associate Vice Chancellor of Biotechnology at the University of Colorado Anschutz Medical Campus and President and CEO of the Fitzsimons Redevelopment Authority (FRA) in Aurora, Colorado. With a focus on fostering discovery and innovation to enhance research funding, he founded CU Innovations to revolutionize technology transfer at the university. The FRA, formed in 1996, aims to create a vibrant life sciences community by linking discovery with entrepreneurship, currently hosting 81 companies. VanNurden, a founding member of the CU Healthcare Innovation Venture Fund, was previously Chair of Mayo Clinic Ventures, where he oversaw the commercialization of nearly 2,000 Mayo Clinic discoveries and the formation of over 50 companies, demonstrating his extensive leadership in the medical field.



SUJATHA VENKATARAMAN, PHD is a research scientist at The Morgan Adams Foundation Pediatric Brain Tumor Research Program, housed within Children's Hospital Colorado, and an Associate Research Professor at CU Anschutz in the Department of Pediatric Hematology and Oncology. Dr. Venkataraman's unwavering commitment to pediatric cancer research is truly inspiring. She specializes in therapeutic development for pediatric brain tumors, with a primary focus on DIPG (diffuse intrinsic pontine glioma), a uniformly fatal brain tumor. Her research aims to unravel the genetic underpinnings of DIPG and identify pathways driving tumor aggressiveness. She has identified novel immunotherapy targets in DIPG. To continue her work and give new hope to families affected by DIPG, she co-founded Vināśa Oncology along with Dr. Vibhakar.



AMY WEDEKING SHANNON, MBA, BA founded CaliberOne Solutions, LLC. Previously, she served as Chief Commercial Officer at Prima-Temp, held roles in sales, business development, and finance at Eli Lilly and Guidant, and led sales and marketing at Flagship Biosciences and Medical Simulation Corporation. Amy also facilitated the Medical Ethics course at the University of Colorado Medical School, served as an Industry Advisor to the Leapfrog Group on Patient Safety, and held positions on various boards and as an advisor for SPARK, CU Innovations at the University of Colorado. She is a leadership coach and holds a BA in Molecular and Cellular Developmental Biology from the University of Colorado and an MBA from Duke University.



DAVID WESTERLY, PHD is a board-certified medical physicist and Associate Professor in the Department of Radiation Oncology at CU Anschutz, where he has been a faculty member since 2009 after earning his PhD in Medical Physics from the University of Wisconsin - Madison. He focuses on providing high-quality clinical medical physics services for cancer patients undergoing radiation therapy and is actively involved in teaching and research. In collaboration with Dr. Quentin Diot and colleagues from the Colorado School of Mines, he co-developed an innovative non-invasive treatment device for non-melanoma skin cancer, which is progressing towards a Phase 1 clinical trial. Supported by multiple grants, including SPARK awards, and resulting in several patent applications, this work led to the founding of OncoPatch, Inc. in 2023, where Dr. Westerly serves as co-founder and CEO.



Innovations

UNIVERSITY OF COLORADO ANSCHUTZ MEDICAL CAMPUS

CUANSCHUTZ.EDU/CU-INNOVATIONS

NOTES



Lined area for taking notes, featuring horizontal lines and a decorative pattern of small squares on the right side.



Innovations

UNIVERSITY OF COLORADO ANSCHUTZ MEDICAL CAMPUS

CUANSCHUTZ.EDU/CU-INNOVATIONS

NOTES



Lined area for taking notes, featuring horizontal lines and a decorative pattern of small squares on the right side.



Innovations

UNIVERSITY OF COLORADO ANSCHUTZ MEDICAL CAMPUS

CUANSCHUTZ.EDU/CU-INNOVATIONS

NOTES



Lined area for taking notes, featuring horizontal lines and a decorative pattern of small squares on the right side.



Innovations

UNIVERSITY OF COLORADO ANSCHUTZ MEDICAL CAMPUS

CUANSCHUTZ.EDU/CU-INNOVATIONS

NOTES



THANK YOU FOR ATTENDING!

Full bios can
be viewed on the
event website



PLATINUM SPONSORS:



COLORADO
Office of Economic Development
& International Trade

SPONSORS:



K1C
CONSULTING



CUANSCHUTZ.EDU/CU-INNOVATIONS