




University of Colorado  
Anschutz Medical Campus

## The Anschutz Health Sciences Building

Construction Update  
02 December 2019

CAAICON



- 
- Construction Status
    - Accomplishments to Date
    - Upcoming Activities
  - R2 Loading Dock
  - LEED Scorecard

# Agenda



# Project Leadership and Staff



Doug Wilson, Project Director  
[doug.wilson@caaicon.com](mailto:doug.wilson@caaicon.com)

Daniel Loosbrock, Project Executive  
[daniel.loosbrock@caaicon.com](mailto:daniel.loosbrock@caaicon.com)



Eric Snelling, General Superintendent



University of Colorado  
Anschutz Medical Campus

David Turnquist, Associate Vice Chancellor  
Facilities Management

Michael Barden, Director  
Facilities Projects

Ethan Carter, PhD, Director  
Department of Environmental Health and Safety

Breanne Beck, Senior Industrial Hygienist  
Department of Environmental Health and Safety

LoriAnn Smith, Associate Director  
University Risk Management

An aerial photograph of a large university campus, showing a dense arrangement of academic buildings, dormitories, and green spaces. The image is in grayscale, with the text 'Construction Status' overlaid in the center. The campus layout includes a central corridor with buildings on either side, and various open areas with trees and lawns. The text is in a large, bold, black sans-serif font.

# Construction Status





## Status

Level 2 Concrete Pours

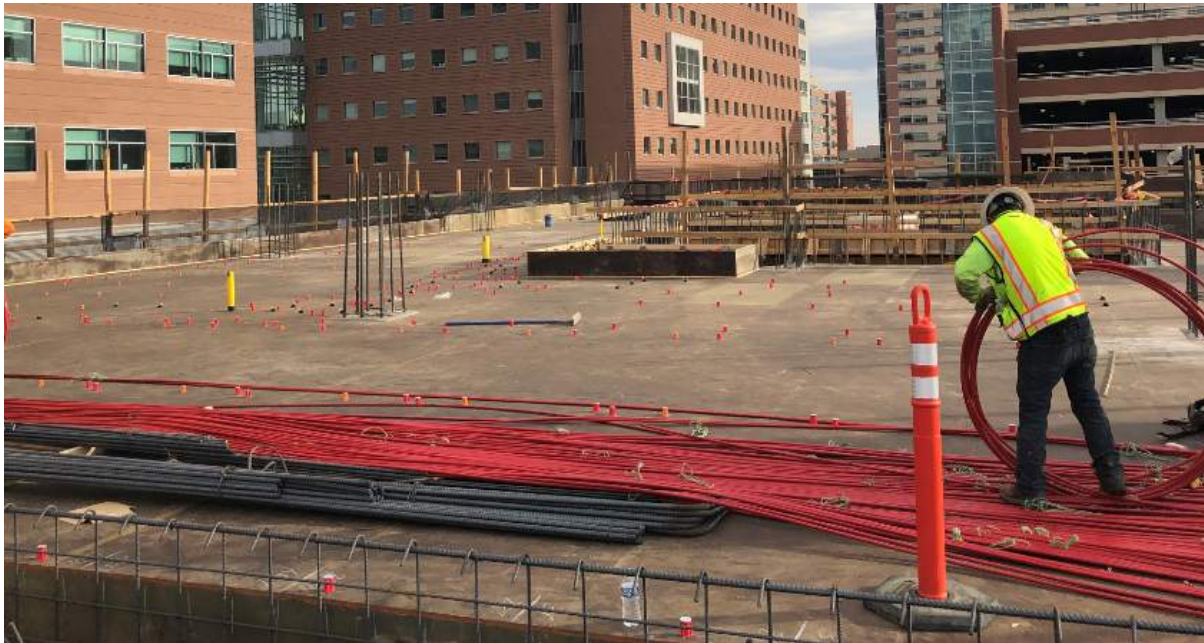
Form Deck - Level 3 Pour 2

Vertical – Level 3 Pour 1

Ongoing - Elevator and Stair Cores







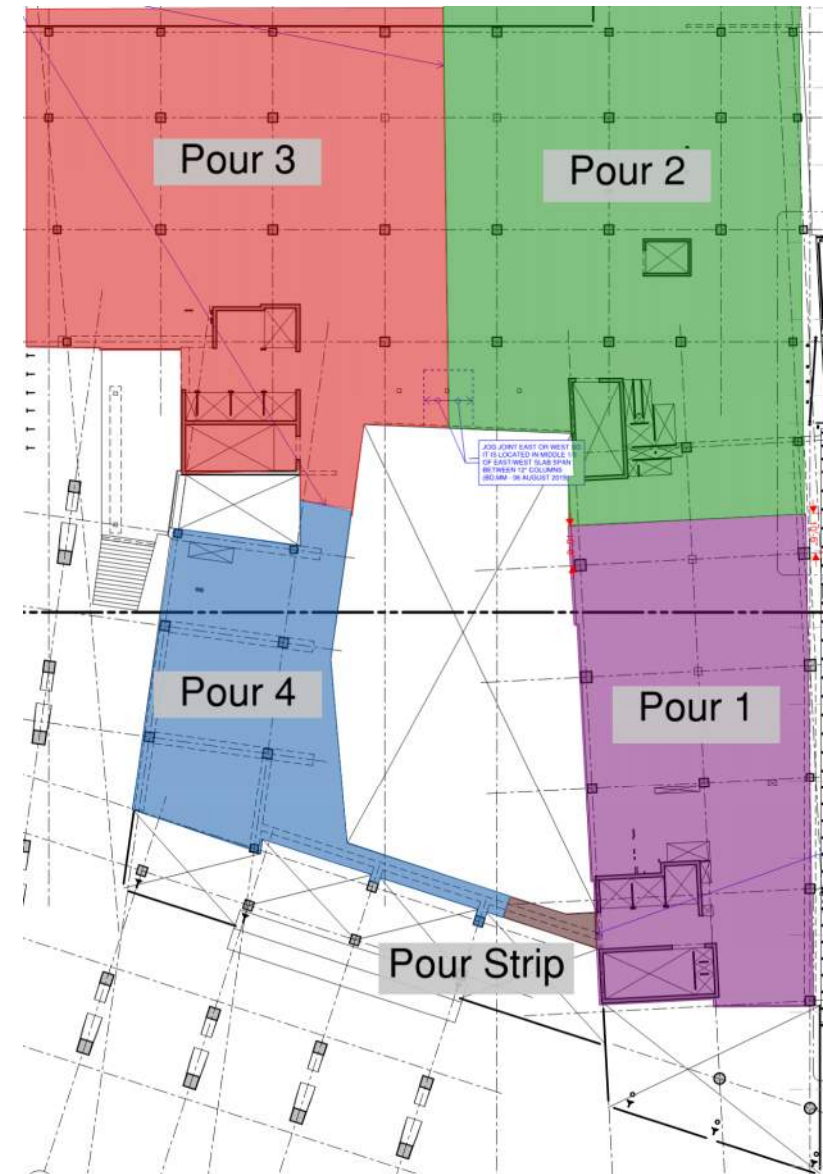
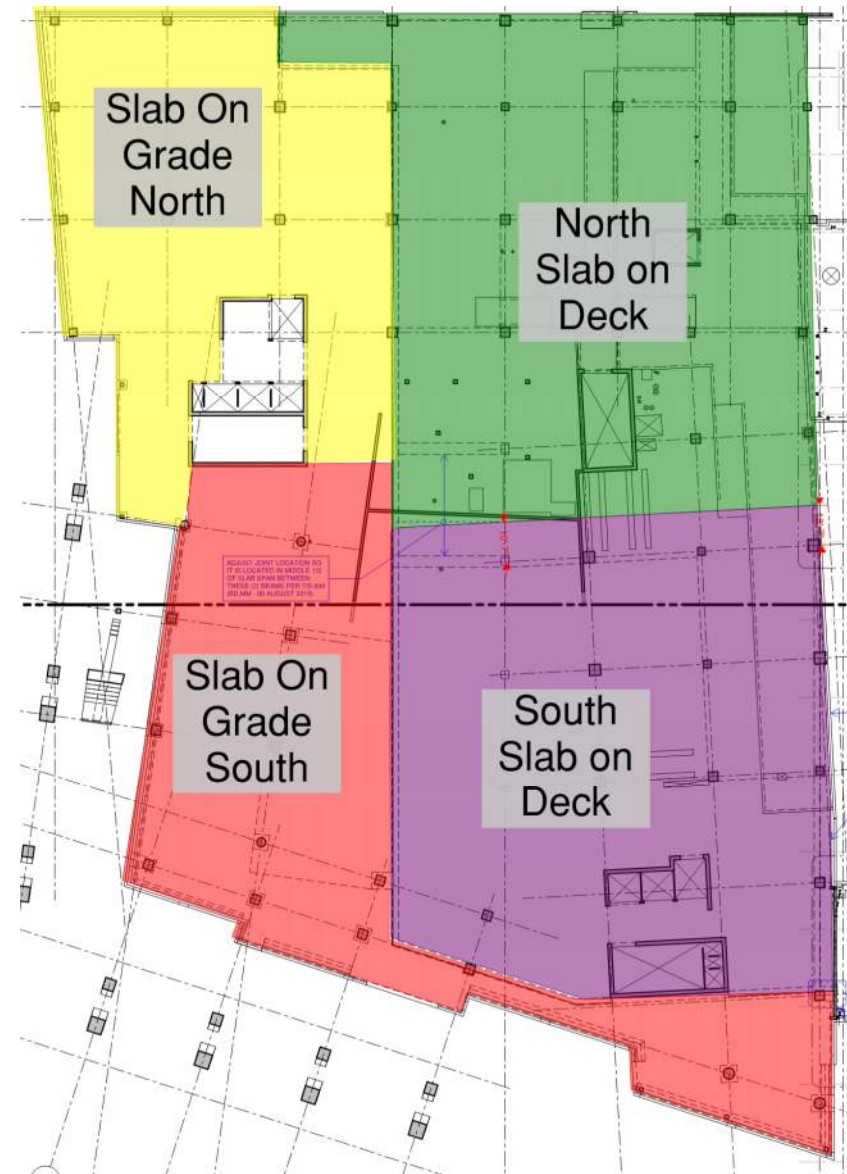


An aerial, grayscale photograph of a large university campus. The image shows a dense collection of academic buildings, dormitories, and administrative structures, interspersed with green spaces, trees, and parking lots. A major road or highway runs along the left side of the campus. The text "Upcoming Activities" is centered over the middle of the image in a large, black, sans-serif font.

# Upcoming Activities

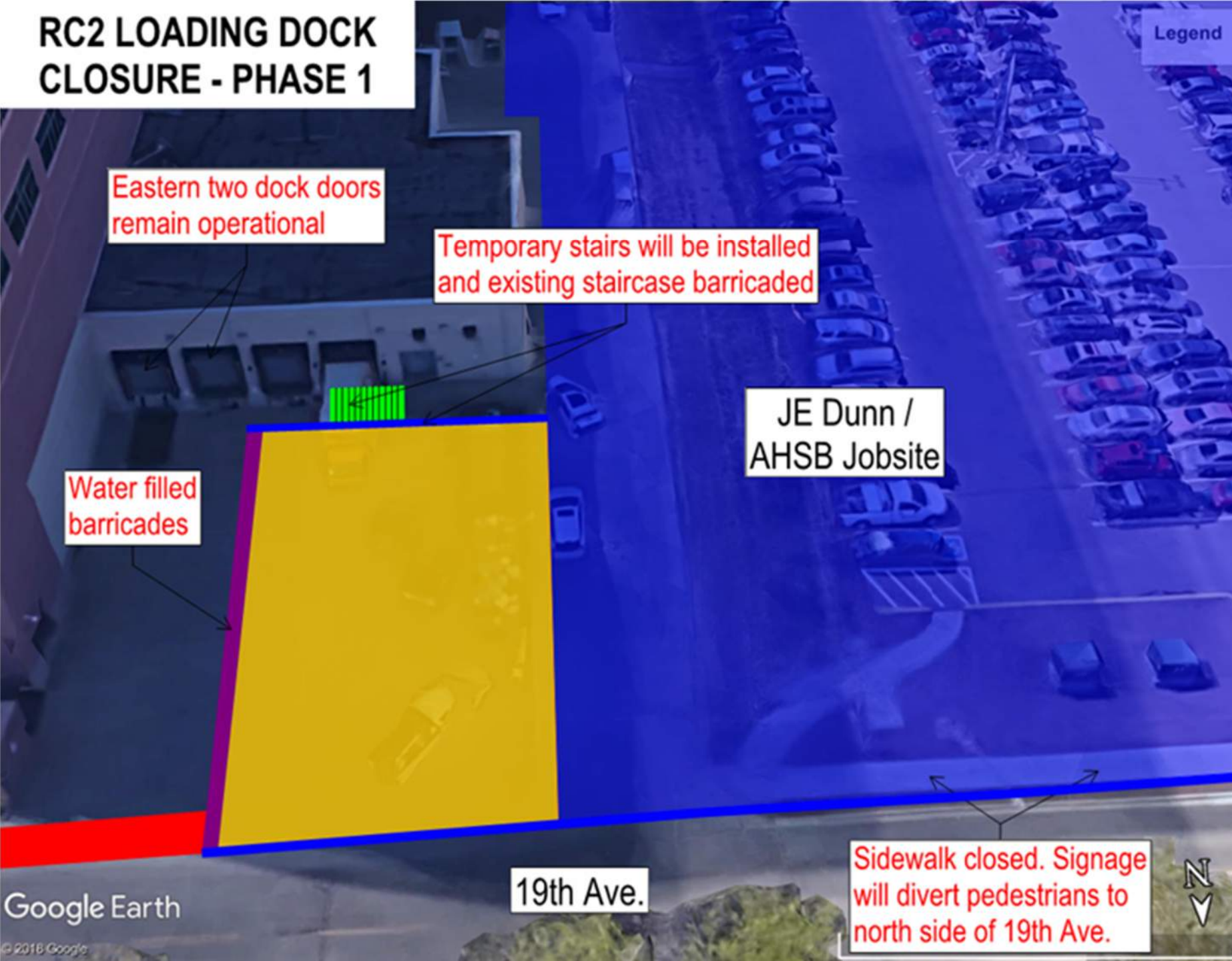
# Upcoming Activities

- Framing and Decking of Level 3
- Pour 3
- Level 3 Pour 2
- Continued reinforcing, along with Plumbing and Electrical coordination.
- RC2 Loading Dock Closure – Phase 1
- Grease Interceptor Install
- Fuel Oil Tank Install
- North Tunnel Install





# RC2 LOADING DOCK CLOSURE - PHASE 1



Legend

Phase 1 duration: 5-6 months

- Preparations begin 12/2
- Excavation begins 12/9

Phase 1 work includes:

- Demolition
- Excavation
- Shoring installation
- Utility installation
- Tunnel construction
- New fuel oil tank

Dumpster access on the south side of R2



An aerial photograph of a large university campus, showing a dense arrangement of academic and administrative buildings, green spaces, and parking lots. The image is in a light, faded color palette. Overlaid on the center of the image is the text "LEED Scorecard" in a large, bold, black sans-serif font.

# LEED Scorecard





# LEED v4 for BD+C: New Construction and Major Renovation

## Progress Checklist - Construction Documents

Project Name: **CU Anschutz Health Sciences Building**

Date: June 4th, 2019

Y ? N

|   |  |  |          |                     |   |
|---|--|--|----------|---------------------|---|
| 1 |  |  | Credit 1 | Integrative Process | 1 |
|---|--|--|----------|---------------------|---|

| 9 | 0 | 7 | Location and Transportation                                    | 16 |
|---|---|---|--|----|
|   |   |   | Credit 1 <del>LEED for Neighborhood Development Location</del> | 16 |
| 1 |   |   | Credit 2 Sensitive Land Protection                             | 1  |
|   |   | 2 | Credit 3 High Priority Site                                    | 2  |
| 2 |   | 3 | Credit 4 <del>Surrounding Density and Diverse Uses</del>       | 5  |
| 4 |   | 1 | Credit 5 Access to Quality Transit                             | 5  |
| 1 |   |   | Credit 6 Bicycle Facilities                                    | 1  |
| 1 |   |   | Credit 7 Reduced Parking Footprint                             | 1  |
|   |   | 1 | Credit 8 Green Vehicles  | 1  |

| 5 | 1 | 4 | Sustainable Sites |   | 10       |
|---|---|---|-------------------|---|----------|
| Y |   |   | Prereq 1          | Construction Activity Pollution Prevention    | Required |
| 1 |   |   | Credit 1          | Site Assessment                               | 1        |
|   |   | 2 | Credit 2          | Site Development - Protect or Restore Habitat | 2        |
| 1 |   |   | Credit 3          | Open Space                                    | 1        |
|   | 1 | 2 | Credit 4          | Rainwater Management (v4.1 ACP)               | 3        |
| 2 |   |   | Credit 5          | Heat Island Reduction                         | 2        |
| 1 |   |   | Credit 6          | Light Pollution Reduction                     | 1        |

| 7 | 0 | 4 | Water Efficiency |                               | 11       |
|---|---|---|------------------|-------------------------------|----------|
| Y |   |   | Prereq 1         | Outdoor Water Use Reduction   | Required |
| Y |   |   | Prereq 2         | Indoor Water Use Reduction    | Required |
| Y |   |   | Prereq 3         | Building-Level Water Metering | Required |
| 1 |   | 1 | Credit 1         | Outdoor Water Use Reduction   | 2        |
| 4 |   | 2 | Credit 2         | Indoor Water Use Reduction    | 6        |
| 1 |   | 1 | Credit 3         | Cooling Tower Water Use       | 2        |
| 1 |   |   | Credit 4         | Water Metering                | 1        |

| 23 | 0 | 10 | Energy and Atmosphere                               | 33       |
|----|---|----|---|----------|
| Y  |   |    | Prereq 1 Fundamental Commissioning and Verification | Required |
| Y  |   |    | Prereq 2 Minimum Energy Performance                 | Required |
| Y  |   |    | Prereq 3 Building-Level Energy Metering             | Required |
| Y  |   |    | Prereq 4 Fundamental Refrigerant Management         | Required |
| 6  |   |    | Credit 1 Enhanced Commissioning                     | 6        |
| 13 |   | 5  | Credit 2 Optimize Energy Performance                | 18       |
| 1  |   |    | Credit 3 Advanced Energy Metering                   | 1        |
|    |   | 2  | Credit 4 Demand Response                            | 2        |
|    |   | 3  | Credit 5 Renewable Energy Production                | 3        |
| 1  |   |    | Credit 6 Enhanced Refrigerant Management            | 1        |
| 2  |   |    | Credit 7 Green Power and Carbon Offsets             | 2        |

| 5 | 3 | 5 | Materials and Resources |   | 13       |
|---|---|---|-------------------------|---|----------|
| Y |   |   | Prereq 1                | Storage and Collection of Recyclables                   | Required |
| Y |   |   | Prereq 2                | Construction and Demolition Waste Management Planning   | Required |
| 1 | 1 | 3 | Credit 1                | Building Life-Cycle Impact Reduction (v4.1 ACP)         | 5        |
| 1 |   | 1 | Credit 2                | BPDO - Environmental Product Declarations (v4.1 ACP)    | 2        |
| 1 | 1 |   | Credit 3                | BPDO - Sourcing of Raw Materials (v4.1 ACP)             | 2        |
| 1 |   | 1 | Credit 4                | BPDO - Material Ingredients (v4.1 ACP)                  | 2        |
| 1 | 1 |   | Credit 5                | Construction and Demolition Waste Management (v4.1 ACP) | 2        |

| 3 | 1 | 12 | Indoor Environmental Quality |   | 16       |
|---|---|----|------------------------------|---|----------|
| Y |   |    | Prereq 1                     | Minimum Indoor Air Quality Performance          | Required |
| Y |   |    | Prereq 2                     | Environmental Tobacco Smoke Control             | Required |
| 1 | 1 |    | Credit 1                     | Enhanced Indoor Air Quality Strategies          | 2        |
|   |   | 3  | Credit 2                     | Low-Emitting Materials (v4.1 ACP)               | 3        |
| 1 |   |    | Credit 3                     | Construction Indoor Air Quality Management Plan | 1        |
| 1 |   | 1  | Credit 4                     | Indoor Air Quality Assessment                   | 2        |
|   |   | 1  | Credit 5                     | Thermal Comfort                                 | 1        |
|   |   | 2  | Credit 6                     | Interior Lighting                               | 2        |
|   |   | 3  | Credit 7                     | Daylight  | 3        |
|   |   | 1  | Credit 8                     | Quality Views                                   | 1        |
|   |   | 1  | Credit 9                     | Acoustic Performance                            | 1        |

| 5 | 1 | 0 | Innovation  | 6 |
|---|---|---|---|---|
| 1 |   |   | Credit 1 Innovation: Mercury Reduction Lamp Purchasing Policy                   | 1 |
| 1 |   |   | Credit 2 Innovation : Green Building Education                                  | 1 |
| 1 |   |   | Credit 3 Innovation: Occupant Comfort Survey                                    | 1 |
| 1 |   |   | Credit 4 Exemplary Performance: BPDO EPD's or Heat Island?; or O+M Starter Kit? | 1 |
|   | 1 |   | Credit 5 Pilot: TBD, pilot credit library options only                          | 1 |
| 1 |   |   | Credit 6 LEED Accredited Professional   | 1 |

| 2 | 0 | 2 | Regional Priority - Zip Code 80045                                |  | 4 |
|---|---|---|---|--|---|
|   |   | 1 | Credit 1  | Regional Priority: Surrounding Density (3pts)          | 1 |
|   |   | 1 | Credit 2  | Regional Priority: Rainwater Management (2pts)         | 1 |
| 1 |   |   | Credit 3  | Regional Priority: Optimize Energy Performance (10pts) | 1 |
| 1 |   |   | Credit 4  | Regional Priority: Indoor Water Use Reduction (4pts)   | 1 |
|   |   |   | ALT.: Outdoor Water Use Reduction (2pts); Renewable Energy (3pts) |  |   |

Y ? N

|    |   |    |        |                      |
|----|---|----|--------|----------------------|
| 60 | 6 | 44 | TOTALS | Possible Points: 110 |
|----|---|----|--------|----------------------|

Certified: 40 to 49 points, Silver: 50 to 59 points, Gold: 60 to 79 points, Platinum: 80 to 110



An aerial, grayscale photograph of a large university campus. The image shows a dense arrangement of academic buildings, dormitories, and administrative structures. A network of roads and walkways crisscrosses the campus, interspersed with green spaces and trees. The overall layout is organized and sprawling. The word "Reminders" is superimposed in the center in a large, black, sans-serif font.

# Reminders



- Next Town Hall
  - January TBD; will distribute notice once scheduled
- Information can be found on the Facilities Active Projects website:  
<http://www.ucdenver.edu/about/departments/FacilitiesManagement/FacilitiesProjects/ActiveProjects/Pages/AnschutzHealthSciencesBldg.aspx>
- Contact Information
  - Doug Wilson, [doug.wilson@caaicon.com](mailto:doug.wilson@caaicon.com)
  - Dan Loosbrock, [dan.Loosbrock@caaicon.com](mailto:dan.Loosbrock@caaicon.com)



An aerial photograph of a large university campus. The image shows a dense cluster of academic and administrative buildings, interspersed with green spaces, trees, and parking lots. A major road or highway runs along the right side of the campus. The overall scene is captured in a high-angle, wide-area shot. The word "Questions?" is superimposed in a large, black, sans-serif font on the left side of the image.

# Questions?